

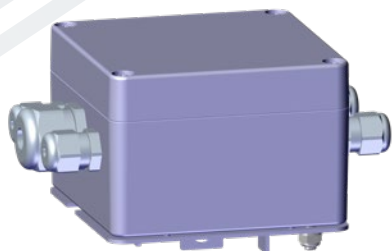
SMGX Heating

HIGHLIGHTS

- Expanded temperature range for SMGX system
- No ice formation on the running surfaces of the SMGX profile
- Retrofittable for existing system
- Ability to be combined with conductor system heating/heating control
- Different heating feeds possible
- 230V and 400V 50/60 Hz possible
- Extended application area of the SMGX system for harsh environments
- Clip-in system for easy-to-use mounting

SMGX HEATING

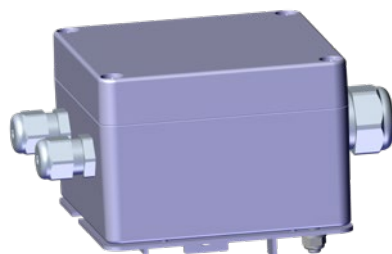
CENTER FEED



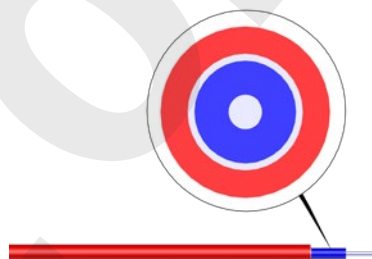
MOUNTING BRACKET



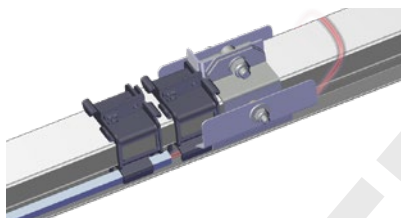
END FEED



HEATING WIRE



END CLAMP



ORDER OVERVIEW

- 10029009 / PROFIL-X:HZ-G-6000+V / U profile for heating wire
- 10029008 / PROFIL-X:HZ-HBH-004+V / Mounting bracket
- 10029022 / PROFIL-X:HZ-ESE+V / End feed
- 10029023 / PROFIL-X:HZ-ESD+V / Center feed
- 10029024 / PROFIL-X:HZ-EK+V / End clamp
- 10014358 / HZU-230/50-16-MU-F1,5-VA-R0000-GA66-S005 / Control*
- 0196381/00 / HL-0,10-EYCEX-5203-PTFE-260-750 / Heating wire*

*System/project dependent